

SPOTTED LANTERNFLY (SLF)

Lycorma delicatula

DESCRIPTION

Egg Mass: Egg masses are approximately 1 inch in size and can contain between 30-50 eggs. They are laid by female spotted lanternflies between September and December and can be seen between September and June. Egg masses are often laid on flat surfaces including tree bark and lawns.

Nymphs: There are four nymphal instars, the first 3 are black with white spots appearing between May through July, the fourth is red with white spots, appearing between July through September. All nymphal stages are strong jumpers to avoid capture or predators.

Adults: Adults can be seen between July and December. The forewing is gray with black spots and the wing tips have black spots outlined in gray. Hind wings have contrasting patches of red and black with a white band. The abdomen is yellow with broad black bands. While the adults can fly, they generally prefer to hop/jump and glide exposing their hindwings.

HOSTS

The Spotted Lanternfly (SLF) prefers, possibly requires, the Tree of Heaven (*Ailanthus altissima*) but will feed on over 70 other host plants including woody trees, ornamental trees, fruit trees, vegetables, herbs, grains and vines. This feeding behavior varies with the life stage, with early instar nymphs having a broader host range than adults.

CONTROL METHODS

Egg Mass Removal: Egg masses can be scraped off, double bagged and thrown away between the months of September and June. They can also be placed into alcohol, bleach or hand sanitizer to kill them.

Trapping: Circle traps can be set on infested trees to collect Spotted Lanternfly nymphs or adults without the use of chemical pesticides. More information can be found through the PennState Extension.

Pesticide Applications: Many commonly available insecticides that kill insects on contact are effective against the Spotted Lanternfly. A list of available products can be found on the NJDA website listed below. Read each label carefully and apply according to the label directions.

OTHER RESOURCES

Camden County Mosquito Commission
www.camdencounty.com/service/mosquito-commission/

NJ Department of Agriculture
www.badbug.nj.gov

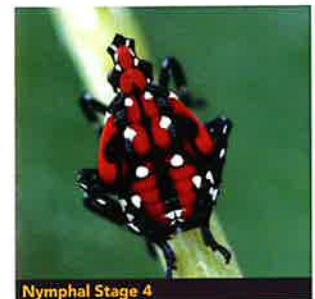
NJ Agricultural Experiment Station at Rutgers
njaes.rutgers.edu/spotted-lanternfly/



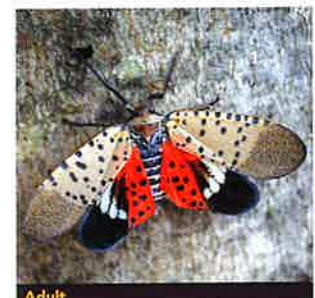
Egg Mass



Nymphal Stages 1-3



Nymphal Stage 4



Adult



Circle Trap